

Florida



Department of Transportation

BOB GRAHAM
GOVERNOR

PAUL N. PAPPAS
SECRETARY

P.O. Box 1089
Lake City, Florida 32056-1089
July 5, 1984

RECEIVED
7/10/84

Mr. R. E. Frame, Chief Engineer Officer
Seaboard System Railroad, Inc.
500 Water Street
Jacksonville, Florida 32202

Dear Sir:

Section 74000-6921, State Road (Cieger Rd.),
Nassau County, Parcel 1 (R/W SIC-C),
Crossing No.: 620814-F
RR MP: SMA-45.40

We are enclosing one (1) fully executed agreement dated June 12, 1984, involving your company and covering the installation of grade crossing traffic control devices estimated at 45,200.

The enclosed documents have been approved by the Department and you may consider this notice as your authorization to proceed with the work under the direction of our District Construction Engineer. Please extend advance notification of work by Railroad forces to our District Railroad Coordinator.

The work under this contract shall be performed in accordance with the provisions of the Federal Highway Administration's Federal-Aid Program Manual Volume 1, Chapter 4, Section 3, and/or Volume 6, Chapter 6, Section 2, as required. Should additional information or meeting with Department representatives be needed, please let us know.

Sincerely yours,

W. T. Crews, District
Railroad Coordinator

WTC/kag

Enclosures: Eight (8) conformed copies of agreement.

cc: Mr. Jim Scott, Resident Engineer, w/copy of agreement.

Mr. E. M. Salley, P. E., Administrator, Rail Operations

Mr. Richard L. King, Nassau Co. Engr. w/copy of agreement



STATE OF FLORIDA DEPARTMENT OF TRANSPORTATION
DIVISION OF PUBLIC TRANSPORTATION
RAILROAD REIMBURSEMENT AGREEMENT
GRADE CROSSING TRAFFIC CONTROL DEVICES
AND FUTURE RESPONSIBILITY
(County)

COUNTY	SECTION	RAIL JOB NO.	STATE ROAD NO.	COUNTY NAME	PARCEL & R/W JOB NO.	F A P NO.
74	000	6921	Gieger Rd.	Nassau	1 (Sig-C)	RRS-000S(124)

THIS AGREEMENT, made and entered into this 12th day of June, 1984, by and between the STATE OF FLORIDA DEPARTMENT OF TRANSPORTATION, hereinafter called the DEPARTMENT, and SEABOARD SYSTEM RAILROAD, INC., a corporation of Virginia, with its principal place of business in the City of Jacksonville, County of Duval, State of Florida, hereinafter called the COMPANY; and Nassau County, a political sub-division of the State of Florida, hereinafter called the COUNTY.

WITNESSETH:

WHEREAS, the DEPARTMENT is constructing, reconstructing or otherwise changing a portion of the State Highway System, designated by the DEPARTMENT as Job No. 74000-6921, between Lime St. and S-108 Ext., which crosses at grade the right-of-way and tracks of the COMPANY at a point 2454 feet North from the COMPANY'S Milepost _____, FDOT/AAR Crossing Number 620814-F, at or near SMA-45, as shown on DEPARTMENT'S Plan Sheet No. 2, attached hereto as part hereof; and

WHEREAS, the work contemplated hereunder is subject to the provisions of the Federal Highway Administration Federal Aid Highway Program Manual, Volume 1, Chapter 4 Section 3 (FHPM 1-4-3), as amended, and Federal Aid Highway Program Manual, Volume 6, Chapter 6, Section 2, Subsection 1 (FHPM 6-6-2-1), as amended, and DEPARTMENT'S Rule 14-46.02, Florida Administrative Code, as amended.

NOW, THEREFORE, in consideration of the mutual undertakings as herein set forth, the parties hereto agree as follows:

A. The COMPANY shall:

1. Install by its own forces, with supervision and approval of the DEPARTMENT, at an estimated cost of \$45,200.00, itemization of which is attached hereto, automatic railroad grade crossing traffic control devices, hereinafter called "Devices", at said location, in accordance with (1) the attached detailed statement of the work, plans and specifications; (2) the DEPARTMENT'S Plans and Standard Index Number 17882, and (3) FHPM 1-4-3 and FHPM 6-6-2-1, or Rule 14-46.02, all of which by reference are made a part hereof.

2. Provide protective services in accordance with U. S. Department of Transportation Manual of Uniform Traffic Control Devices during the performance of the work, as indicated in the attached plans and specifications, the cost of which is included in the attached cost estimate.

3. Render the DEPARTMENT a final bill, in accordance with applicable Federal or State regulations, within one hundred eighty (180) days from the completion date of the project, for all actual reimbursable identified charges including credits for salvage or betterments, if any, attributable to the project; and itemize all substantial charges in a form comparable to the charges contained in the cost estimate.

4. Operate and maintain said devices and perform any adjustment, relocation or replacement of said devices: the cost therefor shall be assumed or apportioned in accordance with Paragraph C below.

B. The DEPARTMENT shall:

1. Promptly reimburse the COMPANY for all actual costs attributable to the project, pursuant to Paragraph A.1., as billed by the COMPANY, pursuant to Paragraph A.3.

2. Retain ten percent from any progress payment.

C. The PARTIES agree:

1. That the cost for the operation and maintenance of the devices by the COMPANY shall be shared as follows:

(a) Fifty percent (50%) shall be borne by the COUNTY and fifty percent (50%) shall be borne by the COMPANY, in accordance with the attached Schedule of Annual Cost of Automatic Highway Grade Crossing Traffic Control Devices, subject to future revision.

2. The cost of any adjustment, relocation or replacement of said devices shall be assumed by the party initiating such action, unless otherwise provided for in this contract, existing contracts between the parties, or in existing contracts between one of the parties and a third party.

3. Each party does hereby indemnify and hold harmless each other from all liability, claims and judgments (including attorney's fees) arising out of work undertaken by any such party pursuant to this agreement, due to the negligent acts or omissions of their contractors, subcontractors, employees, agents or representatives, respectively, except as otherwise covered by bonds or insurance. This provision is a reciprocal covenant and in the event any portion hereof is found by a court of competent jurisdiction to be unenforceable, then this entire Article C.3. shall thereafter be unenforceable in all respects.

4. Any provision contained in any existing contract relating to said crossing, whether between the parties hereto and/or third parties, shall be, and does, remain in full force and effect, except as otherwise provided herein.

IN WITNESS WHEREOF, the parties hereto have caused these presents to be executed by their duly authorized officers, and their official seals hereto affixed, the day and year first above written.

Joe
-1-84

STATE OF FLORIDA
DEPARTMENT OF TRANSPORTATION

BY: *[Signature]* (SEAL)
~~XXXXXXXXXXXXXXXXXXXX~~
(for) Director of Public Transportation Operations
ATTEST: *[Signature]*
Executive Secretary

SEABOARD SYSTEM RAILROAD, INC.

BY: *[Signature]* (SEAL)
Chief Engineering Officer
ATTEST: *[Signature]*
Secretary

NASSAU COUNTY, FLORIDA

BY: *[Signature]* (SEAL)
(Title: _____)
ATTEST: *[Signature]*

Approved as to Form, Legality and Execution
STATE OF FLORIDA DEPARTMENT OF TRANSPORTATION

Examined and Approved: *6-22-84*

BY: *[Signature]* Assistant Attorney
[Signature] Division Administrator
Federal Highway Administration

[Signature]
**FUNDS AVAILABLE
APPROVED - FISCAL
JUN 05 1984**

STATE OF FLORIDA DEPARTMENT OF TRANSPORTATION
DIVISION OF PUBLIC TRANSPORTATION
RAILROAD GRADE CROSSING TRAFFIC CONTROL DEVICES

COUNTY	SECTION	RAIL JOB NO.	STATE ROAD NO.	COUNTY NAME	PARCEL & R/W JOB NO.	F A P NO.
74	000	6921	Gieger Rd.	Nassau	1 (Sig-C)	RRS-000S(124)

AGENCY

Seaboard System Railroad, Inc.

- A. JOB DESCRIPTION & LOCATION: Gieger Rd. near Fernandina Beach
- B. TYPE OF ROADWAY FACILITY: 2 lane rural
- C. FDOT/AAR KING NO.: 620814-F RR MILE POST TIE: SMA-45.40
- D. TYPE SIGNALS PROPOSED: III CLASS IV INDEX: 17882

SCHEDULE OF ANNUAL COST OF AUTOMATIC
HIGHWAY GRADE CROSSING TRAFFIC CONTROL DEVICES

<u>Annual Maintenance Cost Exclusive of Installation</u>		
<u>CLASS</u>	<u>DESCRIPTION</u>	<u>COST*</u>
I	Flashing Signals - One Track	\$ 650.00
II	Flashing Signals - Multiple Tracks	\$ 860.00
III	Flashing Signals and Gates - One Track	\$ 980.00
IV	Flashing Signals and Gates - Multiple Tracks	\$1,230.00

*Effective February 3, 1971

AUTHORITY: FLORIDA ADMINISTRATIVE RULE 014-46.02
Responsibility for the Cost of Automatic Highway
Grade Crossing Traffic Control Devices

EFFECTIVE DATE: February 3, 1971

GENERAL AUTHORITY: 20.05, F.S.

SPECIFIC LAW IMPLEMENTED: 338.21, F.S.

STATE OF FLORIDA DEPARTMENT OF TRANSPORTATION
DIVISION OF PUBLIC TRANSPORTATION

COUNTY RESOLUTION
GRADE CROSSING TRAFFIC CONTROL DEVICES AND FUTURE RESPONSIBILITY

COUNTY	SECTION	RAIL JOB NO.	STATE ROAD NO.	COUNTY NAME	PARCEL & R/W JOB NO.	F A P NO.
74	000	6921	Gieger Rd.	Nassau	1 (Sig-C)	RRS-000S(124)

A RESOLUTION AUTHORIZING EXECUTION OF A RAILROAD REIMBURSEMENT AGREEMENT FOR THE INSTALLATION OF GRADE CROSSING TRAFFIC CONTROL DEVICES, AND FUTURE MAINTENANCE AND ADJUSTMENT OF SAID DEVICES; PROVIDING FOR THE EXPENDITURE OF FUNDS; AND PROVIDING WHEN THIS RESOLUTION SHALL TAKE EFFECT.

RESOLUTION NO. 84-20

ON MOTION OF Commissioner Jones, seconded by Commissioner Armstrong, the following RESOLUTION was adopted:

WHEREAS, the State of Florida Department of Transportation is constructing, reconstructing or otherwise changing a portion of the State Highway System, between Lime St. and S-108 Ext., which shall call for the installation and maintenance of railroad grade crossing traffic control devices for railroad grade crossings over or near said highway.

NOW, THEREFORE, BE IT RESOLVED BY THE COUNTY COMMISSION OF _____ COUNTY, FLORIDA:

That Nassau County enter into a RAILROAD REIMBURSEMENT AGREEMENT with the State of Florida Department of Transportation and the Seaboard System Railroad, Inc., Company for the installation and maintenance of certain grade crossing traffic control devices designated as Job No. 74000-6921 on Gieger Rd. which crosses the right of way and tracks of the Company at FDOT/AAR Crossing Number 620814-F located near Fernandina Beach, Florida; and,

That the County assume its share of the costs for future maintenance and adjustment of said grade crossing traffic control devices as designated in Paragraph 2 of the RAILROAD REIMBURSEMENT AGREEMENT; and,

That the Chairman and Clerk of the Board of County Commissioners be authorized to enter into such agreements with the State of Florida Department of Transportation and the Seaboard System Railroad, Inc. Company as herein described; and,

That this RESOLUTION shall take effect immediately upon adoption.

INTRODUCED AND PASSED by the Board of County Commissioners of Nassau County, Florida, in regular session, this 17th day of May, 198 4.

[Signature]
Chairman of the Board of County Commissioners

ATTEST: [Signature]
Clerk of the Board of County Commissioners

SEABOARD SYSTEM RAILROAD

To: Florida Department of Transportation

Project Ref. 74000-6921

County: Nassau

Location: Fernandina Beach, Fla.

SBD Mile Post: SMA 45.40

Route: Gieger Road

Crossing Inv. No. 620814 F

Description: Install Automatic Highway Crossing Flashing Light Signals, Gates and Bells

Estimated Cost

Material Cost	\$27,700.	
Sales Tax	1,385.	
Handling	1,385.	
Transportation to Project	530.	
Total Material Cost		\$31,000.
Credit for Released Material		00.
Net Material Cost		\$31,000.
Engineering	1,500.	
Plus Composite Additive	873.	
Total Engineering		2,373.
Construction Labor	5,230.	
Plus Composite Additive	2,501.	
Total Construction Labor		7,731.
Supplemental Annuity on Labor		48.
Travel Allowance and Lodging		1,000.
Transportation of Equipment to Project		120.
Equipment Rental		776.
Estimated Material and Labor Cost		\$43,048.
Contingencies		2,152.
TOTAL ESTIMATED COST		\$45,200.
Railroad Portion		00.
Outside Party Estimated Cost		\$45,200.

Office of Chief Communications & Signals Officer
 Jacksonville, Fla. Date: 3-6-84 - cvs

SEABOARD SYSTEM RAILROAD

To: Florida Department of Transportation

Project Ref.: 74000-6921

County: Nassau

Location: Fernandina Beach, Fla.

SBD Mile Post: SMA 45.40

Drawing No.

Route: Gieger Road

Crossing Inv. No. 620814 F

Description: Install Automatic Highway Crossing Flashing Light Signals, Gates and Bells.

Estimate of Signal Material and Cost

1 - Lot Control Equipment, including Cases, Control Apparatus, Rectifiers, Lightning Protective Devices, etc.	\$12,854
1 - Lot Field Materials, including Foundations, Pipe, Cables, Battery, Battery Boxes, Insulated Rail Joints, etc.	7,205
1 - Combination Gate and Signal Assembly, complete with 2 2 ft. Arm and 4 Lamp Units on Mast.	3,852
1 - Combination Gate and Signal Assembly, complete with 20 ft. Arm and 4 Lamp Units on Mast.	3,789
	<hr/>
Material Cost	\$27,700

Office of Chief Communications and Signals Officer
Jacksonville, Fla. Date: 3-6-84-cvs

RESOLUTION NO. 83-34

A RESOLUTION AUTHORIZING THE EXECUTION OF THE SIGNAL MAINTENANCE AGREEMENT BETWEEN THE STATE OF FLORIDA DEPARTMENT OF TRANSPORTATION AND NASSAU COUNTY BOARD OF COUNTY COMMISSIONERS.

WHEREAS, the Board of County Commissioners of Nassau County, Florida, deem it in the public interest to maintain the costs of the operation of traffic signals located on Geiger Road Section 74000-6921, Nassau County, Crossing No: 620814-F RR MP SMA-45.40 Seaboard System Railroad, Inc.

NOW, THEREFORE, BE IT RESOLVED BY THE BOARD OF COUNTY COMMISSIONERS that:

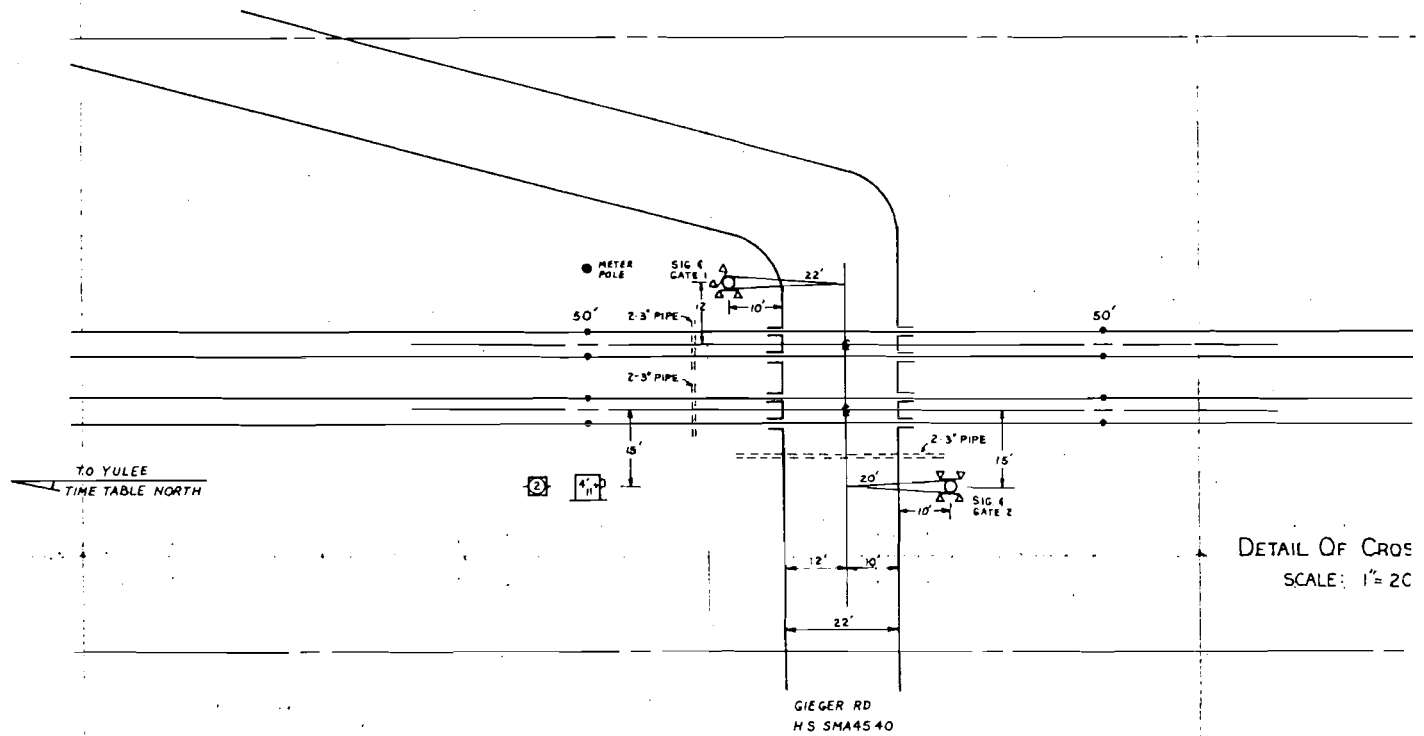
1. The Board concurs in the need for said signalization and agrees to pay for the cost of annual maintenance as per attachment.
2. The type of signals to be installed are of Type III, Class IV.

ADOPTED IN REGULAR BOARD OF COUNTY COMMISSION MEETING ON THE 21st DAY OF June, 19 83.

BOARD OF COUNTY COMMISSIONERS
OF NASSAU COUNTY

BY: Gene Blackwelder
Gene Blackwelder
Its: Chairman

ATTEST: T. J. Greeson
By: _____
T. J. Greeson
Its: Ex-Officio Clerk



DETAIL OF CROSS
 SCALE: 1" = 20'

THIS CONTRACT PLAN SET INCLUDES

RAILROAD SIGNAL PLANS

INDEX OF RAILROAD SIGNAL PLANS SHEET NO	SHEET DESCRIPTION
1	Key Map
2	Plan and Profile Sheet

ROADWAY AND TRAFFIC DESIGN STANDARDS (BOOKLET DATED JAN. 1983)

001	Standard Abbreviations
002	Standard Symbols
17882	Railroad Grade Crossing Traffic Control Devices

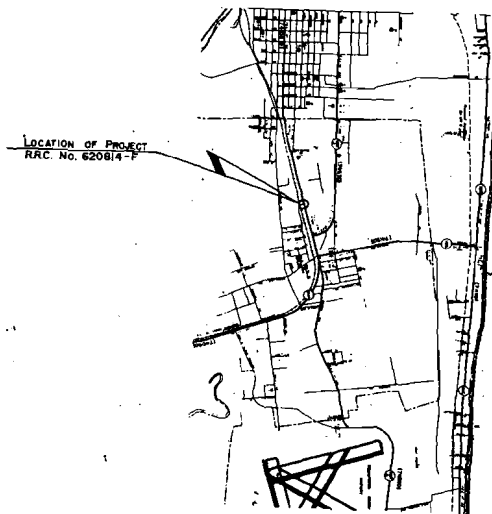
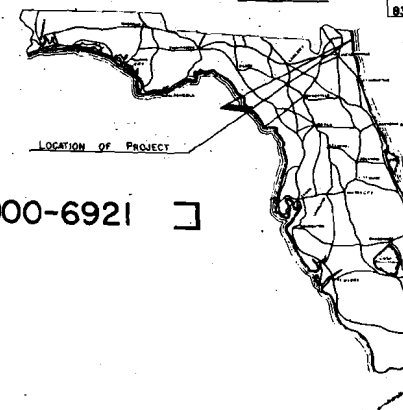
STATE OF FLORIDA
DEPARTMENT OF TRANSPORTATION

PLANS OF PROPOSED
STATE HIGHWAY

F. A. PROJ. NO. RRP-000S(212) [STATE PROJ. NO. 74000-6921]
NASSAU COUNTY
GIEGER ROAD

BUDGET ITEM NO. 2128023

93



ATLANTIC OCEAN



ATTENTION IS DIRECTED TO THE FACT THAT THESE PLANS MAY HAVE BEEN REDUCED SIZE BY REPRODUCTION. THIS MUST BE CONSIDERED WHEN OBTAINING SCALED DATA.

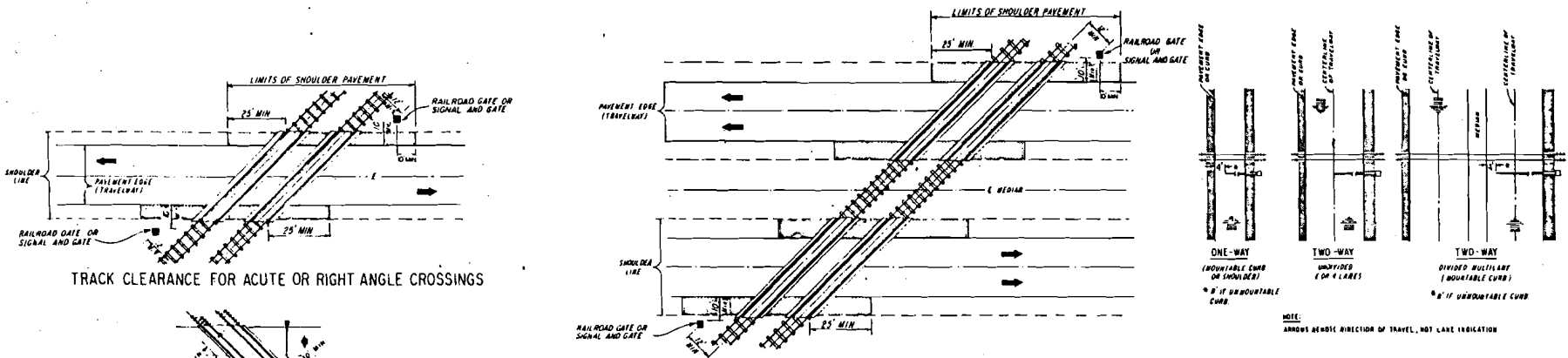
GOVERNING SPECIFICATIONS: STATE OF FLORIDA DEPARTMENT OF TRANSPORTATION, STANDARD SPECIFICATIONS, DATED 1983 AND SUPPLEMENTS THEREUNTO IF NOTED IN SPECIAL PROVISIONS FOR THIS PROJECT. SUBMITTED BY: DIRECTOR OF PRECONSTRUCTION AND DESIGN

DESIGNER: J. HERBORN

APPROVED BY: *[Signature]*
DATE: 9/83

APPROVED: _____ DATE: _____
DIVISION ADMINISTRATOR
FEDERAL HIGHWAY ADMINISTRATION

PLEASE RETAIN THIS SHEET FOR STANDARD PEAR SHEET FROM DOCUMENT FILES.



TRACK CLEARANCE FOR ACUTE OR RIGHT ANGLE CROSSINGS

TRACK CLEARANCE FOR ACUTE OR RIGHT ANGLE CROSSINGS

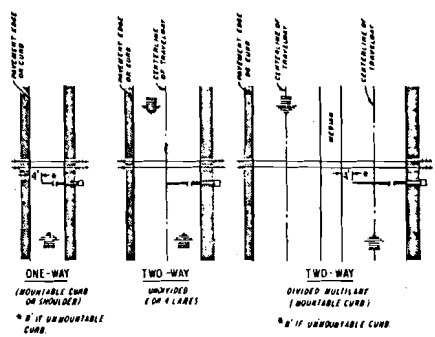
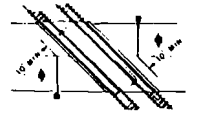


FIGURE 1

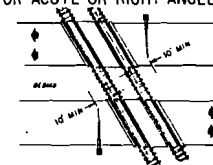
GATE LENGTH REQUIREMENTS

NOTE: ARROWS SHOW DIRECTION OF TRAVEL, NOT LANE INDICATION



TYPICAL LOCATION PLAN FOR GATE OR FLASHING SIGNAL WITH GATE WHEN TRACKS ARE AT OBLIQUE ANGLE.

NOTE: IT IS INTENDED THAT THE FULL SHOULDER WIDTH OF THE EXISTING ROADWAY BE PAVED. WHERE AN EXISTING SHOULDER IS SUBSTANTIALLY SUBSTANDARD FOR THE FACILITY INVOLVED, THE SHOULDER WIDTH SHOULD BE UPGRADED TO MEET CURRENT STANDARDS.



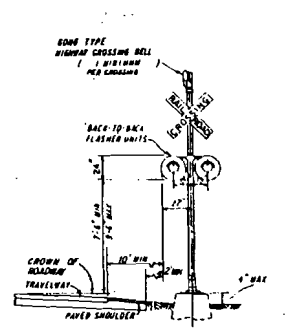
TYPICAL LOCATION PLAN FOR GATE OR FLASHING SIGNAL WITH GATE WHEN TRACKS ARE AT OBLIQUE ANGLE.

SIGNAL PLACEMENT AT RAILROAD CROSSING (2-LANE DESIGN)

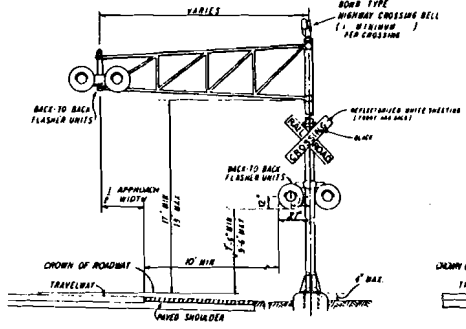
SIGNAL PLACEMENT AT RAILROAD CROSSING (4-LANE DESIGN)

GENERAL NOTES

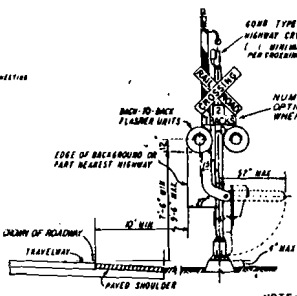
1. NO GUARDRAIL IS PROPOSED FOR SIGNALS; HOWEVER, SOME FORM OF IMPACT ATTENUATION DEVICE MAY BE SPECIFIED FOR CERTAIN LOCATIONS.
2. ADVANCE FLASHER TO BE INSTALLED WHEN AND IF CALLED FOR IN PLANS OR SPECIFICATIONS.
3. TOP OF FOUNDATION SHALL BE NO GREATER THAN 4" ABOVE FINISHED SHOULDER GRADE.
4. TYPE OF TRAFFIC CONTROL DEVICES
 - I FLASHING SIGNALS
 - II FLASHING SIGNALS WITH CANTILEVER
 - III FLASHING SIGNALS WITH GATE
 - IV FLASHING SIGNALS WITH CANTILEVER & GATE
 - V GATE
5. CLASS OF TRAFFIC CONTROL DEVICES
 - I FLASHING SIGNALS - ONE TRACK
 - II FLASHING SIGNALS - MULTIPLE TRACKS
 - III FLASHING SIGNALS AND GATES - ONE TRACK
 - IV FLASHING SIGNALS AND GATES - MULTIPLE TRACKS
6. SIX LANE GRADE CROSSINGS ARE SPECIAL CONDITIONS. PLACEMENT OF RAILROAD TRAFFIC CONTROL DEVICES ARE NOT COVERED UNDER THIS INDEX.



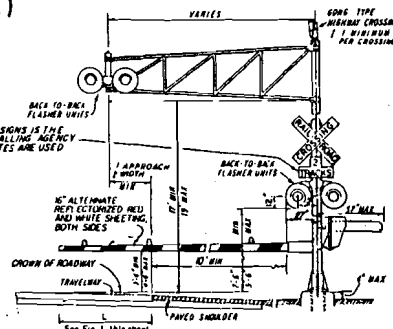
TYPE I



TYPE II



TYPE III



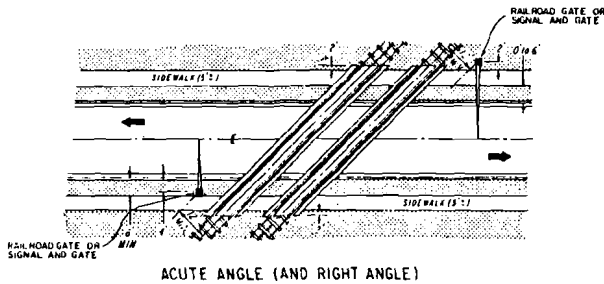
TYPE IV

NOTE: TWO SEPARATE FOUNDATIONS MAY BE REQUIRED SOME FOR SIGNALS, ONE FOR GATE, DEPENDING ON TYPE OF EQUIPMENT USED.

FLORIDA DEPARTMENT OF TRANSPORTATION
TRAFFIC DESIGN
RAILROAD GRADE CROSSING TRAFFIC CONTROL DEVICES

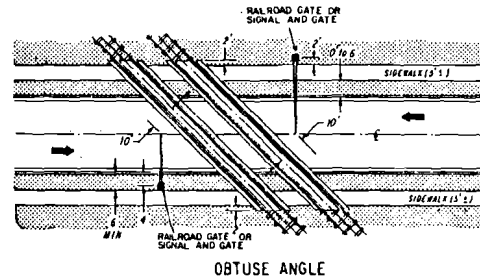
REVISIONS			REVISIONS			INITIALS		DATES	
DATE	INITIALS	DESCRIPTION	DATE	INITIALS	DESCRIPTION	Checked by	CG	4-8-76	Approved
8-7-83	LW	CHANGED DIMENSIONS OF FLASHER UNITS	7-18-77	J J	ADDED SOME TYPE HIGHWAY CROSSING BELL	Checked by	RM	4-8-76	by <i>D. Smith</i> STATE DESIGN ENGINEER - RD.W.T.
			11-9-77	J J	ADDED SHEET 2675 TO INDEX	Quantity by			
			8-21-78	J.M.C.	REVISOR NOTE 5, 13 AND NOTE TO END OF TRACK SIGNS	Checked by			
			8-21-78	J.M.C.	ADDED TYPE 1791 WITH THE OPEN END SIGNAL PLACEMENT 18 - 1/4 APPROXIMATE RISE ADDED GATE TO RAILROAD SIGNAL AND ADDED WHITE ON TRACK LIGHTS AND NOTE 2.	Checked by			
						Superficial by			DRAWING NO. 17882
									INDEX NO. 1 of 3

PLEASE RETAIN THIS SHEET FOR STANDARD DRAWING SHEET



ACUTE ANGLE (AND RIGHT ANGLE)

SIGNAL PLACEMENT AT RAILROAD CROSSING
(2 LANES, CURB & GUTTER)

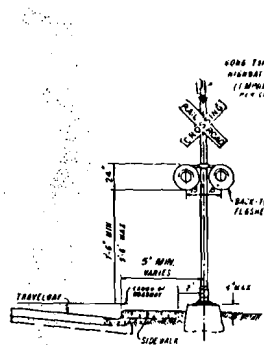


OBTUSE ANGLE

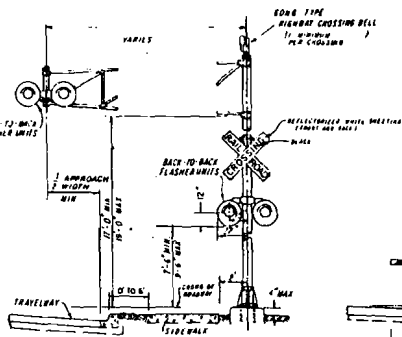
SIGNAL PLACEMENT AT RAILROAD CROSSING
(2 LANES, CURB & GUTTER)

GENERAL NOTES

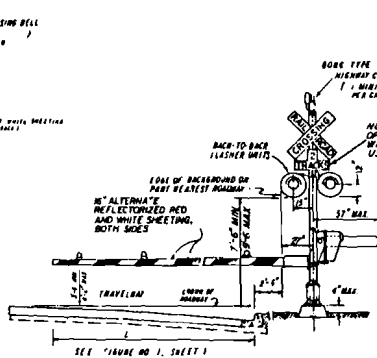
- 7 THE LOCATION OF FLASHING SIGNALS AND STOP LINES SHALL BE ESTABLISHED BASED ON FUTURE (OR PRESENT) INSTALLATION OF GATES WITH APPROPRIATE TRACK CLEARANCES
- 8 WHERE PLANS CALL FOR RAILROAD TRAFFIC CONTROL DEVICES TO BE INSTALLED IN CURBED MEDIANS, THE MINIMUM MEDIAN WIDTH SHALL BE 10 FEET
- 9 LOCATION OF RAILROAD TRAFFIC CONTROL DEVICE IS BASED ON THE DISTANCE AVAILABLE BETWEEN FACE OF CURB & SIDEWALK.
0' TO 6' - LOCATE DEVICE OUTSIDE SIDEWALK.
OVER 6' - LOCATE DEVICE BETWEEN FACE OF CURB AND SIDEWALK.
- 10 STOP LINE TO BE PERPENDICULAR TO EDGE OF ROADWAY, APPROX 15' FROM NEAREST RAIL, OR 8' FROM AND PARALLEL TO GATE WHEN PRESENT



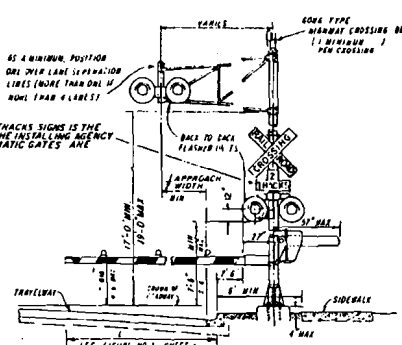
TYPE I



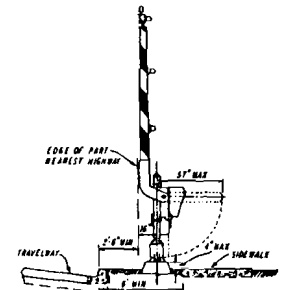
TYPE II



TYPE III




TYPE IV

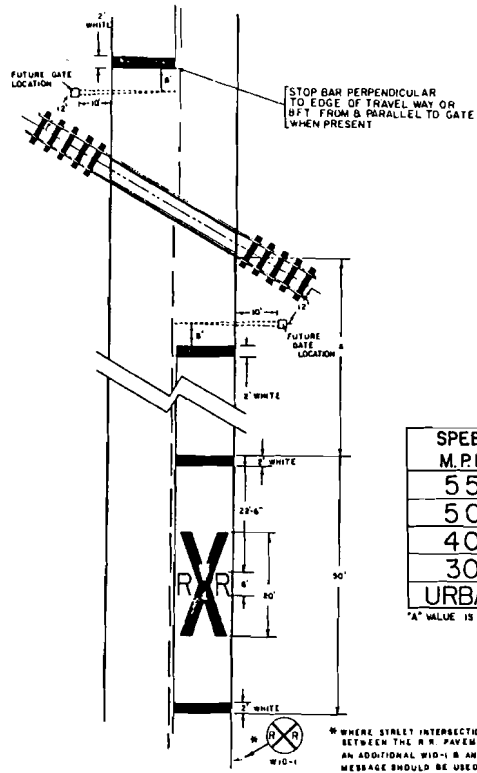


TYPE V

FLORIDA DEPARTMENT OF TRANSPORTATION
TRAFFIC DESIGN
RAILROAD GRADE CROSSING TRAFFIC CONTROL DEVICES

REVISIONS			REVISIONS			DESIGNED BY	INITIALS	DATE	APPROVED BY	DATE
DATE	INITIALS	DESCRIPTION	DATE	INITIALS	DESCRIPTION	CC	CG	4-8-76		
8-7-83	LW	CHANGE DIMENSIONS OF FLASHER UNITS	1-18-77	J.J.	ADDED HORN TYPE HIGHWAY CROSSING BELL	RM	RM	4-8-76	 STATY DESIGN ENGINEER - RDWY	DRAWING NO. 2 OF 3 INDEX NO. 17882
11-9-77	J.J.	ADDED SHEET DAYS TO INDEX	8-27-78	J.W.C.	REVISED UNITS AND REFERENCE TO NUMBER OF TRACKS BY TRACK SIGN.					
					REVISED UNITS AND REFERENCE TO NUMBER OF TRACKS BY TRACK SIGN.					
					REVISED UNITS AND REFERENCE TO NUMBER OF TRACKS BY TRACK SIGN.					

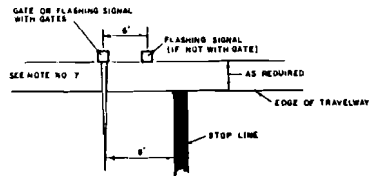
RAILROAD CROSSING AT TWO (2)-LANE ROADWAY



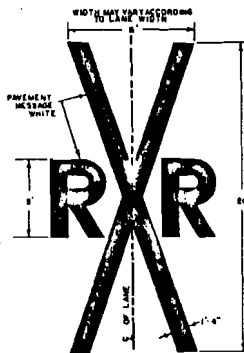
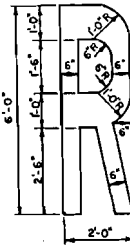
SPEED M.P.H.	"A" IN FT.
55	425
50	350
40	275
30	200
URBAN	50 MIN.

*"A" VALUE IS BASED ON A.A.S.H.O. M11 550

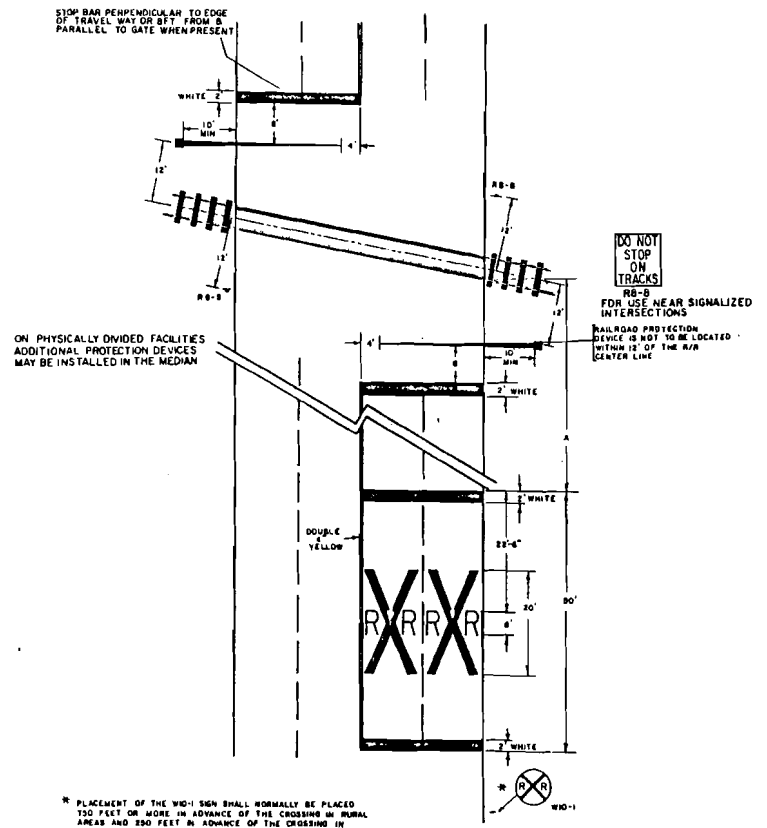
* WHERE STREET INTERSECTIONS OCCUR BETWEEN THE R/R PAVEMENT MESSAGE & THE TRACKS AN ADDITIONAL WID-1 & AN ADDITIONAL PAVEMENT MESSAGE SHOULD BE USED.



RELATIVE LOCATION OF CROSSING TRAFFIC CONTROL DEVICES



RAILROAD CROSSING AT MULTI-LANE ROADWAY



* PLACEMENT OF THE WID-1 SIGN SHALL NORMALLY BE PLACED 150 FEET OR MORE IN ADVANCE OF THE CROSSING IN RURAL AREAS AND 250 FEET IN ADVANCE OF THE CROSSING IN URBAN AREAS EXCEPT THAT IN A RESIDENTIAL OR BUSINESS DISTRICT, WHERE LOW SPEEDS ARE PREVALENT, THE SIGN MAY BE PLACED A MINIMUM DISTANCE OF 100 FEET FROM THE CROSSING. IF THERE IS A STREET INTERSECTION WITHIN 100 FEET AN ADDITIONAL SIGN OR SIGNS MAY BE PLACED TO WARN TRAFFIC APPROACHING THE CROSSING FROM EACH INTERSECTED STREET.

FLORIDA DEPARTMENT OF TRANSPORTATION TRAFFIC DESIGN

RAILROAD GRADE CROSSING TRAFFIC CONTROL DEVICES

REVISIONS			INITIALS	DATES
DATE	INITIALS	DESCRIPTION	Designed by	J.M.C. 12/28/77
8-8-77	J.J.	ADDED TO INDEX	Checked by	
9-27-79	J.M.C.	REALIGN STOP BARS & RELOCATE SIGN RR-2	Quantity by	
		RELOCATE SIGN & ADDED NOTE TO WID-1	Checked by	
09-22-80	J.M.C.	REVISED R/R "R" DIMENSIONS	Supervised by	

Approved: *De Kuhl*
STATE DESIGN ENGINEER-RDWY

DRAWING NO. 3 OF 3 INDEX NO. 17882